



Combi range

Professional lighting equipment
for general purpose stages


SPOTLIGHT
professional lighting for the performing arts

Combi Range - Zoom Profile Spots

General features

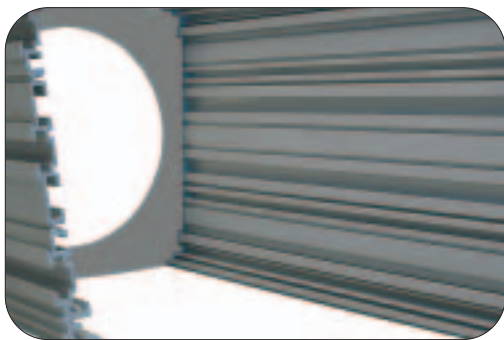


The range of Combi Zoom profile spots offer a number of innovative technical solutions and are constructed from a combination aluminium and steel.

This unique design provides a competitive price whilst maintaining the lighting performance and the professional quality of the Figura profile spot of the Sintesi range



Reversible yoke mounted onto extruded sliding rails, adjustable height for correct balancing of the accessories and for use in any position



Extruded aluminium and steel housing for thermal dissipation and high shock resistance



Filter holder locking system



Lens mounted onto extended retaining holders to allow inner ventilation

Technical features

Products designed for professional use that guarantee:

Durability:

Die-cast extruded aluminium housing, shockproof with anti-scratch paint

Long-Lasting Performance:

Rugged construction, high capacity electrical components with high-temperature insulation and heat resistant glass lenses

Cooling:

By dissipation through an extended finned extruded aluminium surface and by convection through numerous slots even on the back of the luminaire to enhance ventilation when the unit is positioned at a steep angle

Safety:

All luminaires are CE labelled in accordance with the EN 60598-2-17 standards for professional lighting fixtures for public venues and theatres





Yoke mounted on sliding rails for balancing of accessories and use in any position



Profile spots with access to zoom lenses through two sliding doors



Fine adjustment of light centre length for "peak/flat" projection



Rotation angle of shutters much wider than other models' presently on the market

Technical features

The Combi Zoom profile spots have a mechanical structure with similar features as the Combi Fresnel and PC: rugged construction, shock-proof, long lasting performance, optimum cooling in any operating position and highly safe operation in accordance with EN 60 598-2-17 standards

In addition, they also offer:

- Innovative shutter adjustment system, allowing a rotation angle much wider than normal
- Adjustable lamp base to ensure that both 1000 and 1200 W lamps are centred correctly to the reflector (For spots series 12)
- Micrometric adjustment of the lamp holder provides perfect centering of the lamp and selection of light distribution (peak or flat)
- Zoom lenses are situated on separate rails to provide optimum lens travel, maximum zoom width and smooth operation
- Easy access to the interior of the lantern means easy cleaning of all optical parts
- Fully adjustable yoke mountings, (two vertical and sliding lateral) mean the spot can be balanced and focused in any position without interfering with the shaping shutters
- Easy access to the gobo holder and iris slot, which is covered by a sliding door to avoid light spill, when not in use

Zoom Profile Spots

2000/2500W Halogen

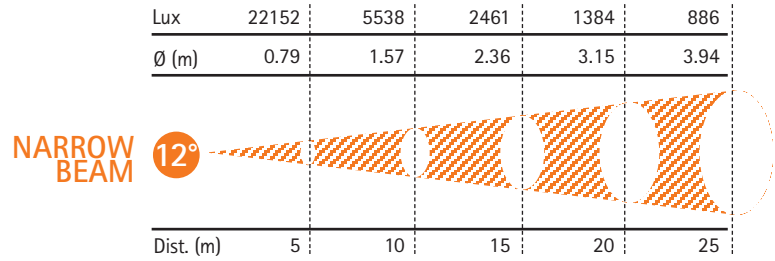
Mod. Combi 25 ZM - Combi 25 ZW

NEW PRODUCT



COMBI 25 ZM

12° to 25° zoom variable profile spot with shaping shutters and slots for Iris/Gobo holder



Dist. (m) 5 10 15 20 25

Lux	8028	2007	892	502	321
∅ (m)	2.22	4.43	6.65	8.87	11.08

WIDE BEAM 25°

Dist. (m) 5 10 15 20 25

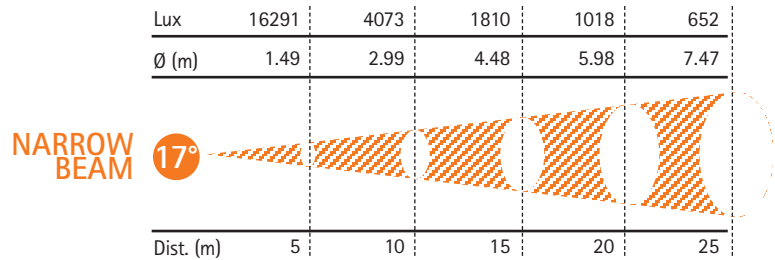
TESTED WITH LAMP CP91 2500W 230V

NEW PRODUCT



COMBI 25 ZW

17° to 36° zoom variable profile spot with shaping shutters and slots for Iris/Gobo holder



Dist. (m) 5 10 15 20 25

Lux	4270	1068	474	267	171
∅ (m)	3.25	6.50	9.75	13.00	16.25

WIDE BEAM 36°

Dist. (m) 5 10 15 20 25

TESTED WITH LAMP CP91 2500W 230V

Technical features

Electrical

- Standard 230V, 50/60Hz power supply (others available on request)
- Lamp-holder type GX 9.5
- 2m power supply cable (plug available on request)
- Strain relief cable clamp entry into light housing

Safety

- Safety mesh (optional)
- Filter-frame locking system
- Compliance to CE EN 60598-2-17 standards

Optical

- Independent lens zoom system 12°-25°(ZM) and 17°-36° (ZW)
- Ellipsoidal reflector in 99.99% polished and treated aluminium: 150mm diameter
- 18-leaf iris diaphragm (optional)
- 4 removable shaping shutters mounted between plates specially treated with an anti-abrasive surface
- 150mm optical tempered glass internal lens
- 230mm optical glass internal lens

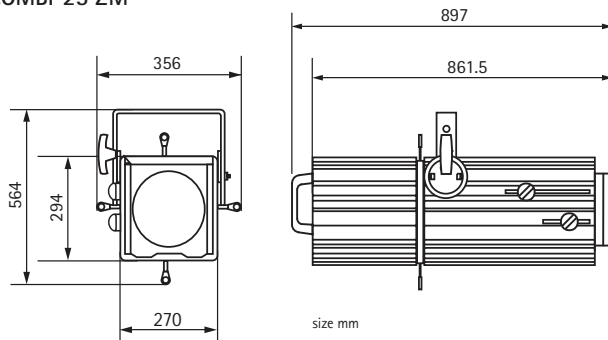
Mechanical

- Extruded aluminium and steel housing
- External black anti-scratch Epoxy Resin paint
- Labyrinth ventilation to avoid light spillage
- Ventilation slots on the rear housing for efficient cooling even in vertical position

Operational

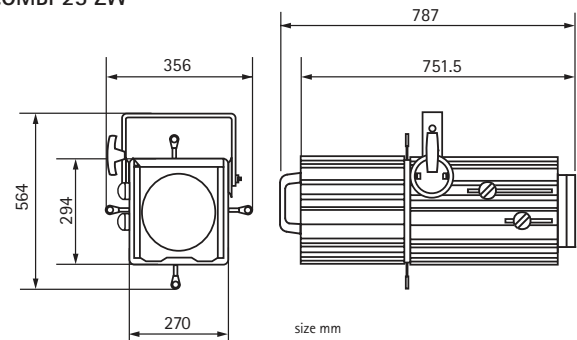
- A and B size gobo holder slots covered by a sliding door to prevent the accessories from falling out and to avoid spill light
- Double sliding door to access lenses for maintenance
- Peak/Even beam setting
- Yoke with 10mm diameter hole, adjustable height, reversible and sliding into extruded rails to balance accessories and for use in any position
- High thermal insulating knobs and handles
- Tilt positioning with fast-locking lever

COMBI 25 ZM



Net weigh Kg 25.1 – Gross weight Kg 30.4 – Box volume m³ 0.230

COMBI 25 ZW



Net weigh Kg 21.3 – Gross weight Kg 27.8 – Box volume m³ 0.230

Information for ordering accessories and different versions

Code

• Combi 25 ZM (12°- 25°)	COM 25 ZM
• Combi 25 ZW (17°- 36°)	COM 25 ZW
Accessories	
• Colour filter frame	TC S25
• Safety mesh	R S25
• Safety bond	FUNE
• Gobo-holder for B size gobos	PGB 185
• Gobo-holder for A size gobos	PGA 185
• Iris diaphragm	DIA 20
• Iris diaphragm with black-out	DIA 20 BO
• Theatre C-hook in black painted steel for 30 to 50mm diameter tubes	GAC
• TV C-hook in die-cast aluminium (PIVOT DIN adaptor required)	A8
• 29mm / M10 spigot adapter	PIVOT DIN
• Aluminium clamp for 50mm diameter tubes	HC / 500
• Superclamp	CLAMP
• Colour changing scroller, DMX 512 or 0/10V controlled	on request
Options	
• 100-120V lamp version	on request
• GY 16 lampholder version	on request

Lamps

FilmTV/Theatre (3200 °K)

Type / Order code	CP75	CP92	CP91	CP72 on request
Power (W)	2000	2000	2500	2000
Lampholder	G22	G22	G22	GY16
Light-centre/base lamp distance (mm)	75	90	90	70
Luminous flux (Lumen)	52000	52000	65000	50000
Life time (hours)	480	400	450	480
Colour temperature (°K)	3200	3200	3200	3200
Supply voltage (V)	230	230	230	230
Nominal current (Amp.)	8.6	8.6	10.8	8.6

Spotlight reserve the right to change specification without prior notice

SPOTLIGHT SRL

VIA SARDEGNA, 3
20098 S. GIULIANO MILANESE - ITALY
PHONE +39.02.98.83.055
FAX +39.02.98.83.056
E-MAIL: SALES@SPOTLIGHT.IT
WEB: WWW.SPOTLIGHT.IT

Your Dealer



SPOTLIGHT  
professional lighting for the performing arts
certified quality management system ISO 9001:2000